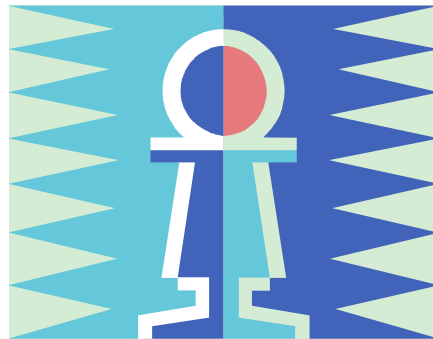


Bid Proposal

2010 Washington State  
Elementary Chess Championships



April 24, 2010

Presented by:

The South Sound Chess Coaches Association (SSCCA)  
2010 Washington State  
Elementary Chess Championships

**Date**

Saturday, April 24, 2010.

**Sponsors:**

\$10,000 – Boeing Employees Credit Union.

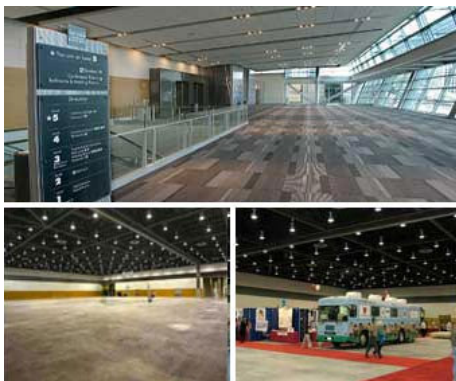
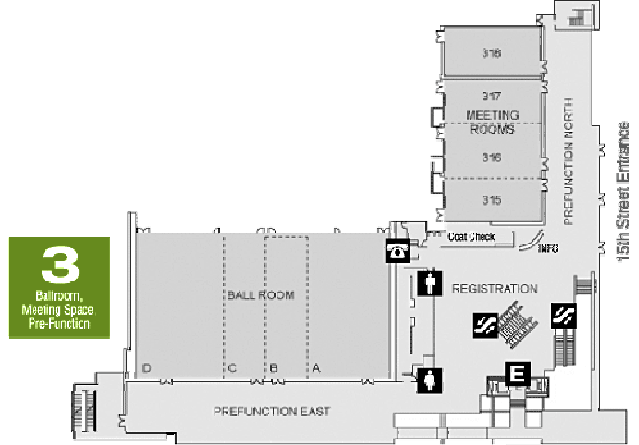
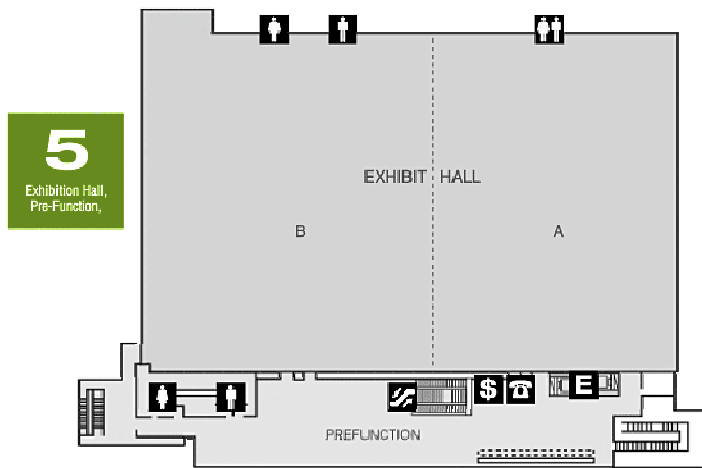
**Facilities**

Greater Tacoma Convention Center.

**Tournament room:** The Exhibition Hall is 50,000 sq ft. There are continuous glass walls and breathtaking views. It includes a glass enclosed pre-function space (9,000 square feet) outside the Exhibition Hall for check-in and some vendors.

**Team Space:** Located on the third floor is the Ballroom with 17,800 square feet of pre-function space. The 13,400 square foot Ballroom is divided into four spaces which can be configured together or independently. Also located on the third floor is an outdoor Terrace.

**Additional Team Space:** There is 24,000 square feet available with up to fourteen separate room configurations. The meeting rooms are located on both the third and fourth floors.



**Parking:**

The Convention Center parking lots accommodate a total of 670 parking spaces (450 in the covered 2nd floor parking garage). Nearby garages and lots including and surrounding the GTCTC can accommodate a total of 1150 vehicles. These parking lots can be accessed off of Market & 17th Street. On site parking lots are operated by Republic Parking, and managed by the City of Tacoma. Free parking is available at the Transit bus station near Freighthouse Square, with free light rail directly to the convention center.

**Game Format and Rules**

The tournament will be a five round Swiss format. The time control will be Game/30 (maximum one hour for each game) or Game/25 with 5-second time delay. Standard USCF rules (latest edition) will be enforced. The Washington State Elementary Chess Championship (WSECC) Policy Board will clarify rules that are specific to the state tournament.

Grade- level divisions will be used in accord with current WSECC rules.

Players with perfect 5.0 scores will be designated co-champions. The traditional Washington scholastic tiebreak scheme will break all other ties (Solkoff, Cumulative score, Cumulative scores of the opposition). Team trophies will be determined by the top five players' cumulative scores from each team.

**Awards**

Trophies will be awarded to the top thirty-five in each grade (section), and the top thirty-five teams in each of K-3 and 4-6. All players scoring 3.0 points or more will receive an award. All players will receive a participation award, and players may only receive one award.

**Players Fees**

Depending on sponsorship the entry fee for the tournament will be no more than \$30, possibly as low as \$20 per player. Scholarships will be available.

**Concessions**

Concessions will be available on site through the catering service contracted with the convention center. There will be several kid-friendly preorder lunch options (vegetarian options also), as well as some parent-friendly options. Concessions and snacks will be available all day long. As well there are many area restaurants and coffee shops that are close to the location of the tournament.

**Check-In and Schedule**

Internet check- in will be preferred, with Friday evening check- in as an option (an 'emergency only' phone number will be provided for last-minute withdrawals, etc.). Players who fail to check- in by Friday, 9:00pm, will not be paired in round one, but will receive a half-point bye. Those still not checked in by the end of round one will be withdrawn from the tournament.

**Team Tables**

Team Tables will be available. Sponsorship will determine the fee for these tables.

**Shirts and Commemorative Boards**

Commemorative t-shirts will be available for purchase during registration. A limited number may be available on-site as well. We may print commemorative chessboards, which would then be available for purchase.

### **Hotel Accommodations**

There is adequate accommodation in the immediate Tacoma area as well as hotels in Fife which is within 15-20 minutes of the tournament site. The SSCCA and Convention Center will be negotiating tournament rates with area hotels.

### **For More Information**

For more information about this bid, contact: Shila MacDonald at [wahoytchess@hotmail.com](mailto:wahoytchess@hotmail.com)

### **Host Organizations**

This bid is a collaborative effort of the South Sound Chess Coaches Association (SSCCA):

Shila MacDonald, **SSCCA Chair**, Washington Hoyt Elementary, Tacoma Public Schools  
Don Moony, **SSCCA Treasurer**, Northwood Elementary, Puyallup School District  
Angela Fields, **SSCCA Corporate Sponsorship**, Charles Wright Academy.

The SSCCA work many volunteer hours to bring the opportunities of elementary and middle school chess to the students of the South Puget Sound area. It is the hopes of the SSCCA that this project will provide the foundation for many more schools to begin chess clubs for their students and broaden the chess experience in the Tacoma-Pierce County, Puyallup and South Puget Sound area.